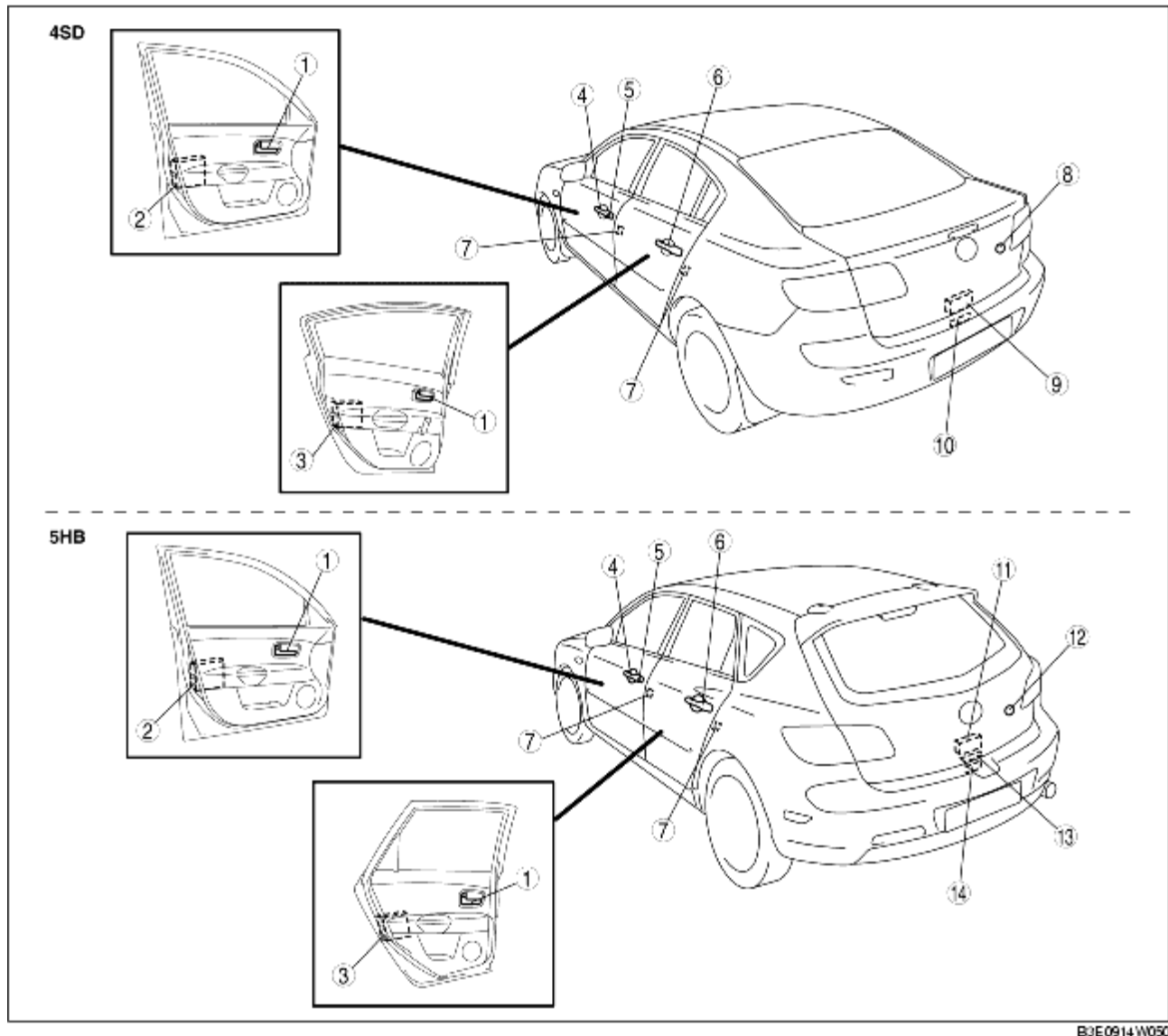


SECURITY AND LOCKS LOCATION INDEX

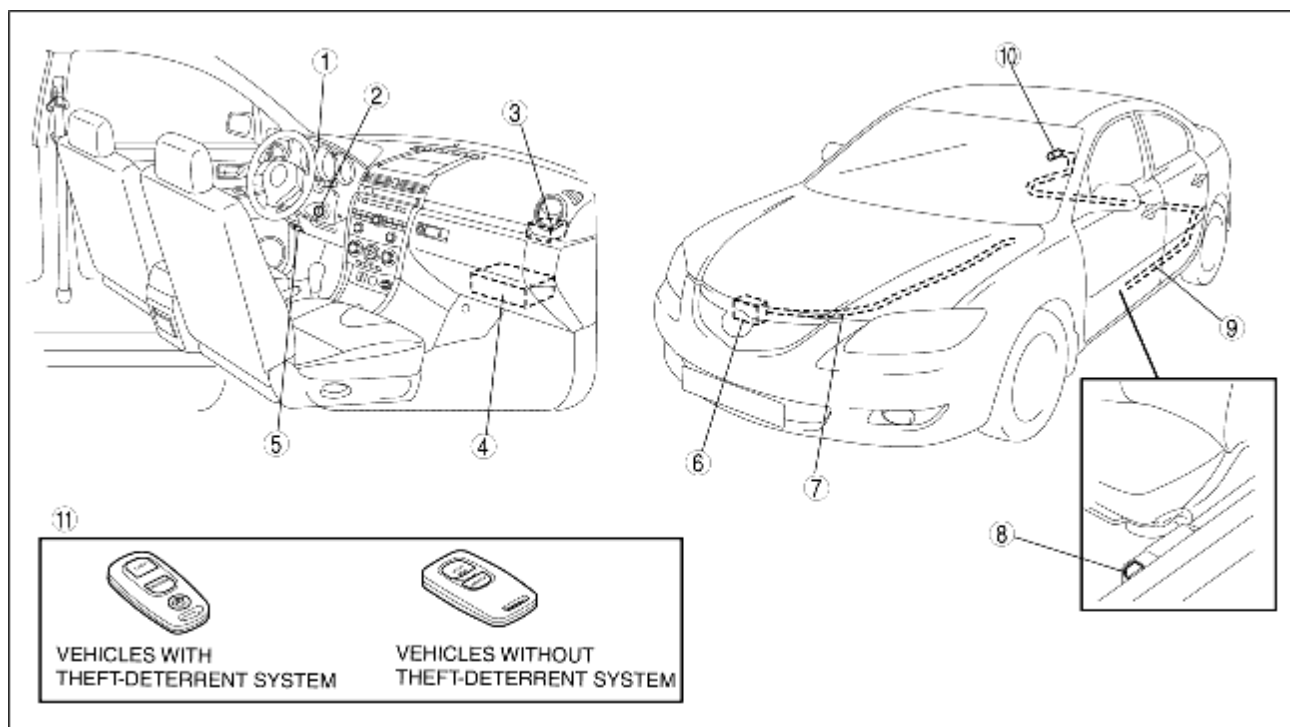
B3E091400001W01



B3E0914W050

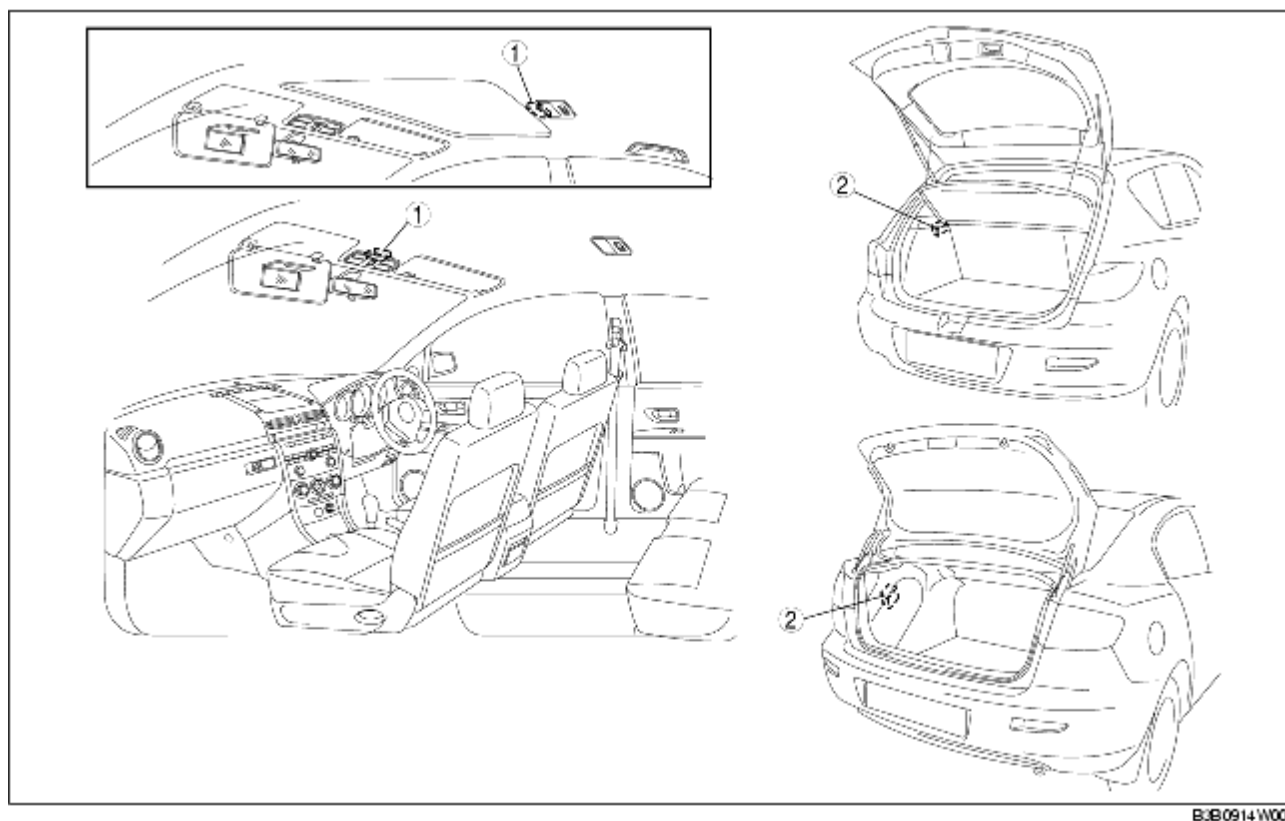
1	Inner handle (See INNER HANDLE REMOVAL/INSTALLATION.)
2	Front door latch and lock actuator (See FRONT DOOR LATCH AND LOCK ACTUATOR REMOVAL/INSTALLATION.) (See FRONT DOOR LATCH AND LOCK ACTUATOR INSPECTION.) (See FRONT DOOR LOCK ACTUATOR INSPECTION.) (See FRONT DOOR LATCH SWITCH INSPECTION.) (See DOOR LOCK-LINK SWITCH INSPECTION.) (See FRONT DOOR KEY CYLINDER SWITCH INSPECTION.)
3	Rear door latch and lock actuator (See REAR DOOR LATCH AND LOCK ACTUATOR REMOVAL/INSTALLATION.) (See REAR DOOR LATCH AND LOCK ACTUATOR INSPECTION.) (See REAR DOOR LATCH AND LOCK ACTUATOR INSPECTION.)

	(See REAR DOOR LATCH SWITCH INSPECTION.)
4	Front outer handle (See FRONT OUTER HANDLE REMOVAL/INSTALLATION.)
5	Front door key cylinder (See FRONT DOOR KEY CYLINDER REMOVAL/INSTALLATION.)
6	Rear outer handle (See REAR OUTER HANDLE REMOVAL/INSTALLATION.)
7	Door lock striker (See DOOR LOCK STRIKER REMOVAL/INSTALLATION.)
8	Trunk lid key cylinder (See TRUNK LID KEY CYLINDER REMOVAL/INSTALLATION.) (See TRUNK LID KEY CYLINDER SWITCH INSPECTION.) (See TRUNK LID KEY CYLINDER PUSH SWITCH INSPECTION.)
9	Trunk lid latch and opener (See TRUNK LID LATCH AND OPENER REMOVAL/INSTALLATION.) (See TRUNK LID OPENER INSPECTION.) (See TRUNK LID LATCH SWITCH INSPECTION.)
10	Trunk lid lock striker (See TRUNK LID LOCK STRIKER REMOVAL/INSTALLATION.)
11	Liftgate latch and lock actuator (See LIFTGATE LATCH AND LOCK ACTUATOR REMOVAL/INSTALLATION.) (See LIFTGATE LOCK ACTUATOR INSPECTION.) (See LIFTGATE LATCH SWITCH INSPECTION.)
12	Liftgate key cylinder (See LIFTGATE KEY CYLINDER REMOVAL/INSTALLATION.)
13	Liftgate outer handle (See LIFTGATE OUTER HANDLE REMOVAL/INSTALLATION.)
14	Liftgate lid lock striker (See LIFTGATE LOCK STRIKER REMOVAL/INSTALLATION.)



B3B0914 W001

1	Instrument cluster (See INSTRUMENT CLUSTER REMOVAL/INSTALLATION.) (See INSTRUMENT CLUSTER REMOVAL/INSTALLATION.) (See IMMOBILIZER SYSTEM COMPONENT REPLACEMENT/KEY ADDITION AND CLEARING.)
2	Coil antenna (See COIL ANTENNA REMOVAL/INSTALLATION.)
3	Keyless control module (See KEYLESS CONTROL MODULE REMOVAL/INSTALLATION.) (See KEYLESS CONTROL MODULE INSPECTION.)
4	PJB (See PASSENGER JUNCTION BOX (PJB) REMOVAL/INSTALLATION.) (See PASSENGER JUNCTION BOX (PJB) INSPECTION.)
5	Bonnet release lever (See BONNET LATCH AND RELEASE LEVER REMOVAL/INSTALLATION [L.H.D.].) (See BONNET LATCH AND RELEASE LEVER REMOVAL/INSTALLATION [R.H.D.].)
6	Bonnet latch (See BONNET LATCH AND RELEASE LEVER REMOVAL/INSTALLATION [L.H.D.].) (See BONNET LATCH AND RELEASE LEVER REMOVAL/INSTALLATION [R.H.D.].) (See BONNET LATCH SWITCH INSPECTION.)
7	Bonnet cable (See BONNET LATCH AND RELEASE LEVER REMOVAL/INSTALLATION [L.H.D.].) (See BONNET LATCH AND RELEASE LEVER REMOVAL/INSTALLATION [R.H.D.].)
8	Fuel-filler lid opener lever (See FUEL-FILLER LID OPENER REMOVAL/INSTALLATION [L.H.D.].) (See FUEL-FILLER LID OPENER REMOVAL/INSTALLATION [R.H.D.].)
9	Fuel-filler lid opener cable (See FUEL-FILLER LID OPENER REMOVAL/INSTALLATION [L.H.D.].) (See FUEL-FILLER LID OPENER REMOVAL/INSTALLATION [R.H.D.].)
10	Fuel-filler lid opener (See FUEL-FILLER LID OPENER REMOVAL/INSTALLATION [L.H.D.].) (See FUEL-FILLER LID OPENER REMOVAL/INSTALLATION [R.H.D.].)
11	Transmitter (See TRANSMITTER BATTERY REPLACEMENT.) (See TRANSMITTER BATTERY INSPECTION.) (See TRANSMITTER ID CODE REGISTRATION.)



B3E0914 W002

1	Intruder sensor (See INTRUDER SENSOR REMOVAL/INSTALLATION.)
2	Theft-deterrent siren (See THEFT-DETERRENT SIREN REMOVAL/INSTALLATION [4SD].) (See THEFT-DETERRENT SIREN REMOVAL/INSTALLATION [5HB].)